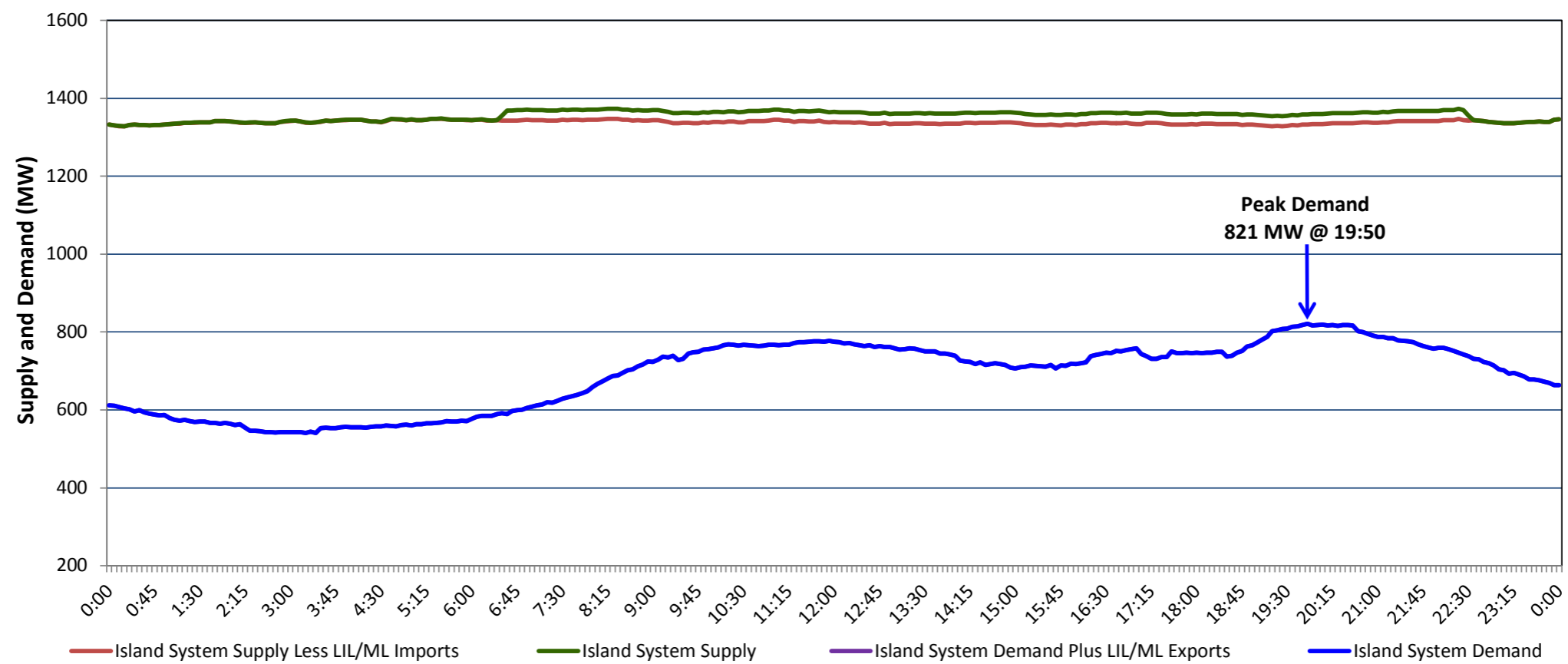


Newfoundland Labrador Hydro (NLH)

Supply and Demand Status Report Filed Monday, October 01, 2018 (Revised - October 02, 2018)

Section 1

Island Interconnected System Supply, Demand & Exports Actual 24 Hour System Performance For Sunday, September 30, 2018



Supply Notes For September 30, 2018

- 1,2
- A As of 1000 hours, July 27, 2018, Holyrood Unit 1 unavailable due to planned outage 88 MW (170 MW).
 - B As of 1609 hours, August 07, 2018, Stephenville Gas Turbine available at 25 MW (50 MW).
 - C As of 1118 hours, August 21, 2018, Holyrood Gas Turbine unavailable due to planned outage (123.5 MW).
 - D As of 1034 hours, September 17, 2018, Bay d'Espoir Unit 4 unavailable due to planned outage (76.5 MW).
 - E As of 2004 hours, September 22, 2018, Bay d'Espoir Unit 3 unavailable due to planned outage (76.5 MW).
 - F As of 2048 hours, September 26, 2018, Holyrood Unit 2 available at 140 MW (170 MW).
 - G As of 1623 hours, September 28, 2018, Holyrood Unit 3 unavailable due to planned outage 110 MW (150 MW).

Section 2

Island Interconnected Supply and Demand

| Mon, Oct 01, 2018 | Island System Outlook ³ | Seven-Day Forecast | Temperature (°C) | | Island System Daily Peak Demand (MW) | |
|--|------------------------------------|-----------------------------|------------------|---------|--------------------------------------|-----------------------|
| | | | Morning | Evening | Forecast | Adjusted ⁷ |
| Available Island System Supply: ⁵ | 1,280 MW | Monday, October 01, 2018 | 8 | 9 | 915 | 915 |
| NLH Island Generation: ⁴ | 1,015 MW | Tuesday, October 02, 2018 | 7 | 5 | 945 | 945 |
| NLH Island Power Purchases: ⁶ | 100 MW | Wednesday, October 03, 2018 | 6 | 5 | 1,010 | 1,010 |
| Other Island Generation: | 165 MW | Thursday, October 04, 2018 | 8 | 10 | 935 | 935 |
| ML/LIL Imports: | - | Friday, October 05, 2018 | 13 | 8 | 890 | 890 |
| Current St. John's Temperature & Windchill: | 7 °C | Saturday, October 06, 2018 | 7 | 7 | 975 | 975 |
| 7-Day Island Peak Demand Forecast: | 1,010 MW | Sunday, October 07, 2018 | 7 | 11 | 995 | 995 |

Supply Notes For October 01, 2018

- 3
- H At 0706 hours, October 01, 2018, Stephenville Gas Turbine unavailable due to planned outage 25 MW (50 MW).

- Notes:
1. Generation outages for running and corrective maintenance are included. These are not unusual for power system operations. They generally do not impact customer supply. The power system operators schedule outages to system equipment whenever possible to coincide with periods when customer demands are low and sufficient supply reserves are available. However, from time to time equipment outages are necessary and reserves may be impacted.
 2. Due to the Island System having no synchronous connections to the larger North American grid, when there is a sudden loss of large generating units some customer's load must be interrupted for short periods to bring generation output equal to customer demand. This automatic action of power system protection, referred to as under frequency load shedding, is necessary to ensure the integrity and reliability of system equipment. Under frequency events typically occur 5 to 8 times per year on the Island Interconnected System and the resultant customer load interruptions are generally less than 30 minutes.
 3. As of 0800 Hours.
 4. Gross output including station service at Holyrood (24.5 MW) and improved NLH hydraulic output due to water levels (35 MW).
 5. Gross output from all Island sources (including Note 4).
 6. NLH Island Power Purchases include: CBPP Co-Gen, Nalcor Exploits, Rattle Brook, Star Lake, Wind Generation and capacity assistance (when applicable).
 7. Adjusted for curtailable load, market activities and the impact of voltage reduction when applicable.

Section 3

Island Peak Demand Information Previous Day Actual Peak and Current Day Forecast Peak

| | | | |
|-------------------|--|-------|--------|
| Sun, Sep 30, 2018 | Actual Island Peak Demand ⁸ | 19:50 | 821 MW |
| Mon, Oct 01, 2018 | Forecast Island Peak Demand | | 915 MW |

- Notes: 8. Island Demand / LIL / ML Exports (where applicable) is supplied by NLH generation and purchases, plus generation owned and operated by Newfoundland Power and Corner Brook Pulp & Paper (Deer Lake Power, DLP).